



THE
NIGHTINGALE

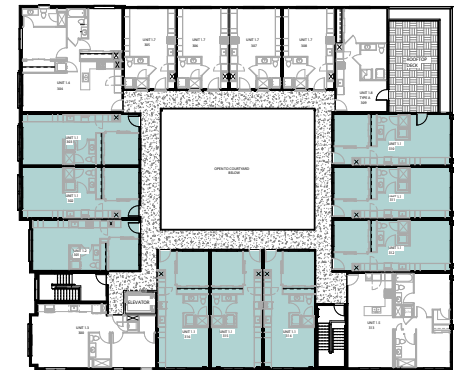
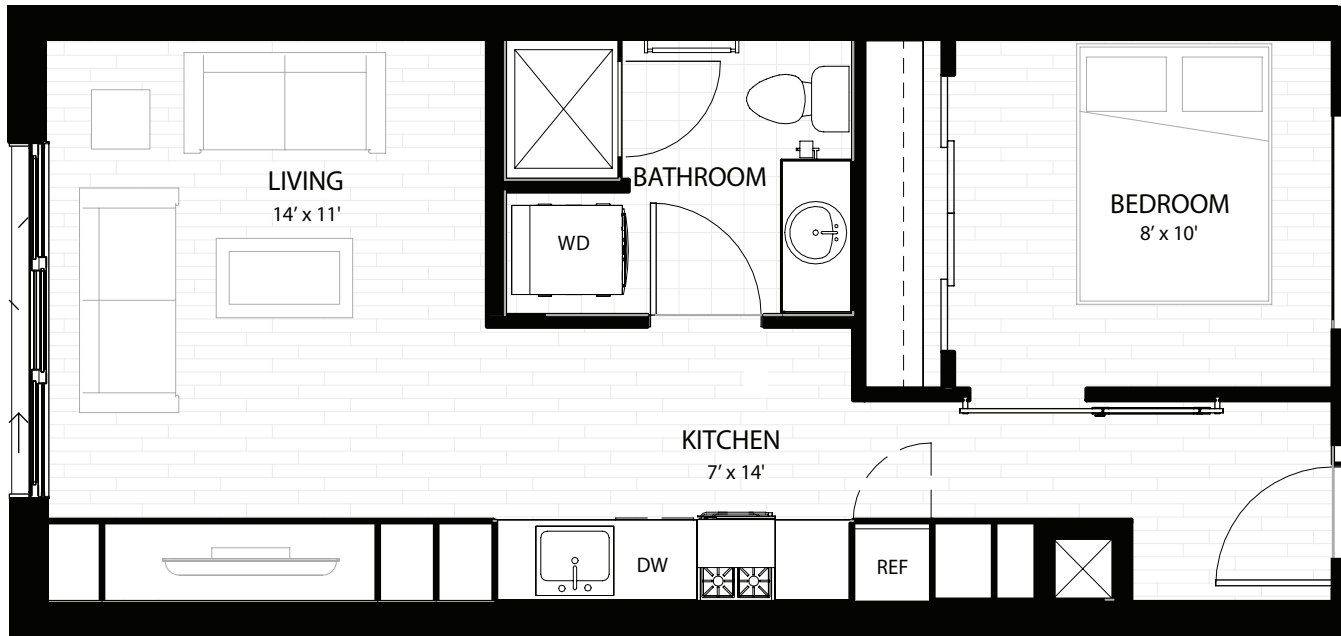
MAYFAIR

1 BR/1 BA

512 sq ft

The efficient use of space was the driving principle for our 1-bedroom layouts. Each home includes built-in cabinetry designed specifically for the Mayfair, with ample storage and plenty of closet space throughout.

The Mayfair is available on all levels of The Nightingale, with street views on the ground floor and Juliet balconies on upper levels.



All dimensions and specifications (including square footages) are approximate and provided for comparison purposes only. Actual areas may be smaller. Maps, site plans, floor plans, drawings and elevations are artist renderings and are for informational purposes only and should not be relied upon as representations, express or implied, of the project. Product availability, prices, floorplans, elevations, and specification levels, including square footages, are subject to change without notice or obligation. The sale of any or all homes may be changed or withdrawn at any time.

thenightingaledenver.com

