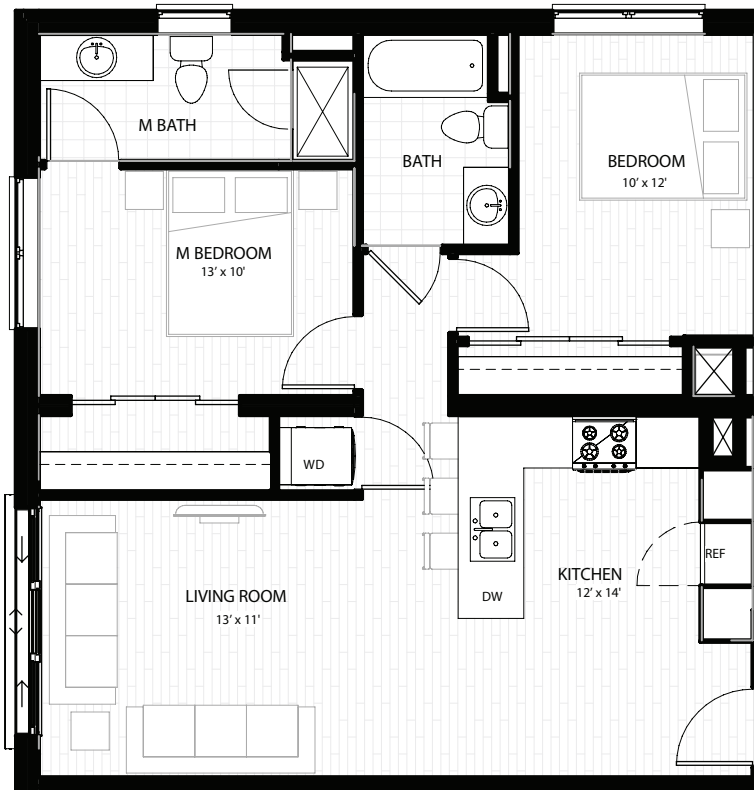




THE  
NIGHTINGALE

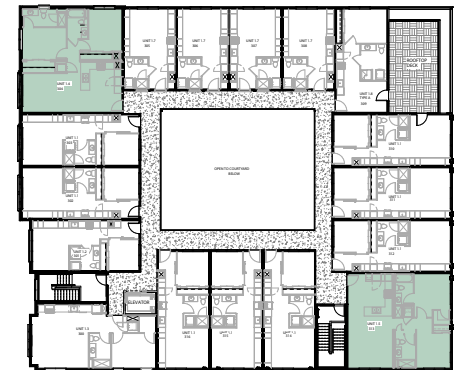
# FLORENCE

2 BR/ 2 BA  
819 - 1000 sq ft



The efficient use of space and functionality was the driving principle for our 2-Bedroom 2-bathroom Layouts. Each home includes built-in cabinetry designed specifically for the Florence, with ample storage and plenty of closet space throughout.

The Florence is available in corner locations of the second and third levels of The Nightingale.



All dimensions and specifications (including square footages) are approximate and provided for comparison purposes only. Actual areas may be smaller. Maps, site plans, floor plans, drawings and elevations are artist renderings and are for informational purposes only and should not be relied upon as representations, express or implied, of the project. Product availability, prices, floorplans, elevations, and specification levels, including square footages, are subject to change without notice or obligation. The sale of any or all homes may be changed or withdrawn at any time.

[thenightingaledenver.com](http://thenightingaledenver.com)

