



THE  
**NIGHTINGALE**

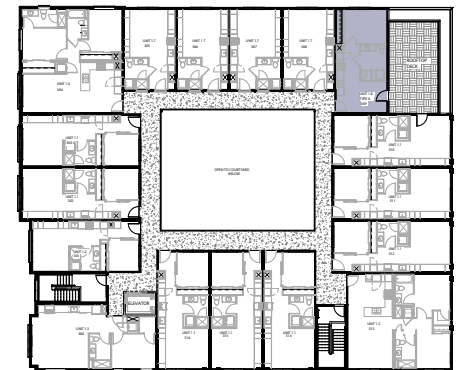
# ALEXANDRIA

1 BR / 1 BA ADA  
464 sq ft



The efficient use of space was the driving principle for our 1-bedroom layouts. Alexandria includes built-in cabinetry with ample storage and plenty of closet space throughout.

There is one Alexandria available on the third level of The Nightingale which includes a patio deck facing the east.



All dimensions and specifications (including square footages) are approximate and provided for comparison purposes only. Actual areas may be smaller. Maps, site plans, floor plans, drawings and elevations are artist renderings and are for informational purposes only and should not be relied upon as representations, express or implied, of the project. Product availability, prices, floorplans, elevations, and specification levels, including square footages, are subject to change without notice or obligation. The sale of any or all homes may be changed or withdrawn at any time.

[thenightingaledenver.com](http://thenightingaledenver.com)

